



# mirvish

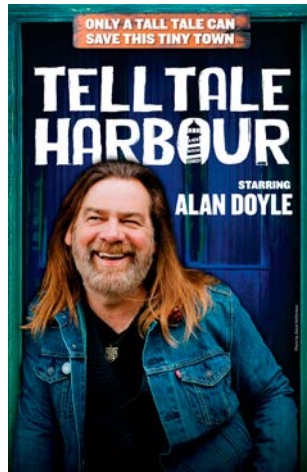
## PROGRAMME GUIDE

**UPCOMING SHOWS**

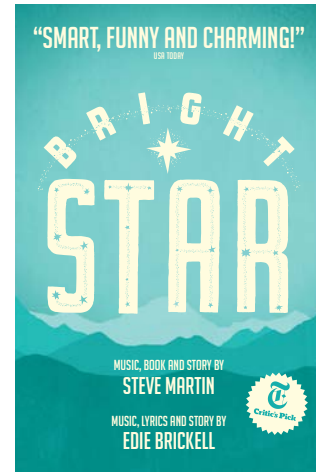
# Upcoming Shows



September 16-November 2, 2025  
CAA Ed Mirvish Theatre



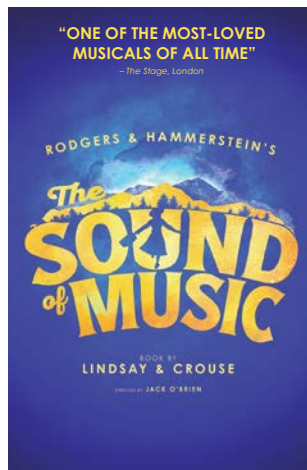
September 23-November 2, 2025  
Royal Alexandra Theatre



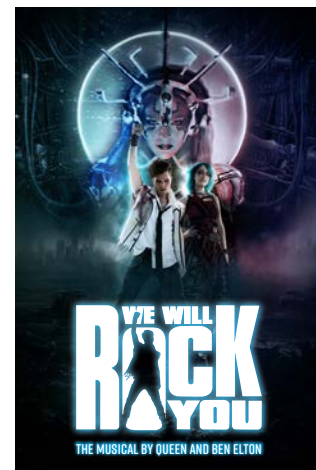
September 30-November 2, 2025  
CAA Theatre



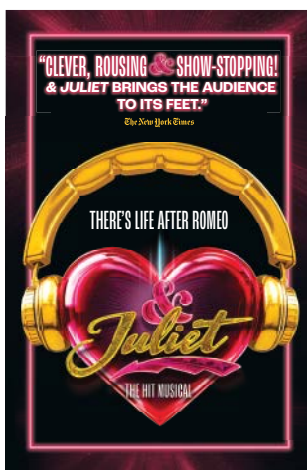
November 6-23, 2025  
CAA Theatre



November 25, 2025-January 4, 2026  
Princess of Wales Theatre



November 28, 2025-January 4, 2026  
CAA Ed Mirvish Theatre



December 3, 2025-June 28, 2026  
Royal Alexandra Theatre



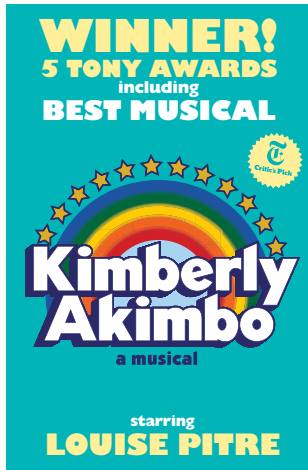
December 4, 2025-January 4, 2026  
CAA Theatre



January 6-18, 2026  
Princess of Wales Theatre



# Upcoming Shows



January 15-February 15, 2026  
CAA Theatre



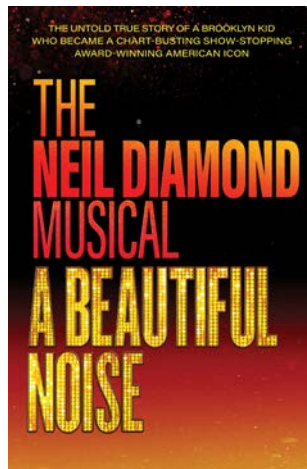
February 10-March 15, 2026  
CAA Ed Mirvish Theatre



March 3-April 5, 2026  
Princess of Wales Theatre



March 14-April 12, 2026  
CAA Theatre



April 28-June 7, 2026  
Princess of Wales Theatre



June 16-July 26, 2026  
CAA Ed Mirvish Theatre

# Rates & Dates

PRODUCTION	THEATRE	DATES	CIRCULATION	HALF PAGE RATES	FULL PAGE RATES	OUTSIDE BACK COVER	INSIDE FRONT COVER	INSIDE BACK COVER	MATERIAL DEADLINE
<b>MJ The Musical</b>	CAA EMT	September 16- November 2, 2025	110,000	\$5,500	\$8,800	\$12,320	\$11,000	\$10,120	August 28
<b>Tell Tale Harbour</b>	RAT	September 23- November 2, 2025	70,000	\$3,500	\$5,600	\$7,840	\$7,000	\$6,440	August 28
<b>Bright Star</b>	CAAT	September 30- November 2, 2025	30,000	\$1,500	\$2,400	\$3,360	\$3,000	\$2,760	September 12
<b>Ava: The Secret Conversations</b>	CAAT	November 6- November 23, 2025	28,000	\$1,400	\$2,240	\$3,136	\$2,800	\$2,576	October 17
<b>The Sound of Music</b>	POW	November 25, 2025- January 4, 2026	90,000	\$4,500	\$7,200	\$10,080	\$9,000	\$8,280	November 7
<b>We Will Rock You</b>	CAA EMT	November 28, 2025- January 4, 2026	100,000	\$5,000	\$8,000	\$11,200	\$10,000	\$9,200	November 11
<b>&amp; Juliet (Run 1)</b>	RAT	December 3, 2025- February 8, 2026	100,000	\$5,000	\$8,000	\$11,200	\$10,000	\$9,200	November 14
<b>The Woman in Black</b>	CAAT	December 4, 2025- January 4, 2026	28,000	\$1,400	\$2,240	\$3,136	\$2,800	\$2,576	November 14
<b>Mrs. Doubtfire</b>	POW	January 6-18, 2026	30,000	\$1,500	\$2,400	\$3,360	\$3,000	\$2,760	December 19
<b>Kimberly Akimbo</b>	CAAT	January 15- February 15, 2026	28,000	\$1,400	\$2,240	\$3,136	\$2,800	\$2,576	December 29
<b>&amp; Juliet (Run 2)</b>	RAT	February 10- April 19, 2026	100,000	\$5,000	\$8,000	\$11,200	\$10,000	\$9,200	January 23
<b>Some Like It Hot</b>	CAA EMT	February 10- March 15, 2026	80,000	\$4,000	\$6,400	\$8,960	\$8,000	\$7,360	January 23
<b>Shucked</b>	POW	March 3-April 5, 2026	80,000	\$4,000	\$6,400	\$8,960	\$8,000	\$7,360	February 13
<b>Cyrano</b>	CAAT	March 14-April 12, 2026	23,000	\$1,150	\$1,840	\$2,576	\$2,300	\$2,116	February 25
<b>&amp; Juliet (Run 3)</b>	RAT	April 21- June 28, 2026	100,000	\$5,000	\$8,000	\$11,200	\$10,000	\$9,200	April 3
<b>A Beautiful Noise</b>	POW	April 28-June 7, 2026	100,000	\$5,000	\$8,000	\$11,200	\$10,000	\$9,200	April 9
<b>The Outsiders</b>	CAA EMT	June 16-July 26, 2026	100,000	\$5,000	\$8,000	\$11,200	\$10,000	\$9,200	May 28

- Premium Position Pricing Includes:  
Outside Back Cover = Full Page Rate plus 40%  
Inside Front Cover = Full Page Rate plus 25%  
Inside Back Cover = Full Page Rate plus 15%
- All rates shown are NET rates. Taxes extra.

- Additional shows are added throughout the season. Programme publishing schedule is subject to change.
- Double Page Spread = Double Full Page Rate, less 15%.
- Programme Inserts - Please contact us for more information.

**FOR MORE INFORMATION ABOUT MIRVISH OPPORTUNITIES, PLEASE CONTACT:**



Brian Himel | 416-305-5654 | [brian.himel@brandsamplified.com](mailto:brian.himel@brandsamplified.com)  
Jory Amar | 416-725-1423 | [jory.amar@brandsamplified.com](mailto:jory.amar@brandsamplified.com)

322 King Street West, Suite 400, Toronto, Ontario M5V 1J2



# Mechanical Specifications (Printed Programme)

## FULL PAGE

Trim Size	Bleed Size	Live Area
5.375" wide 8.375" high	5.625" wide 8.625" high	4.625" wide 7.625" high

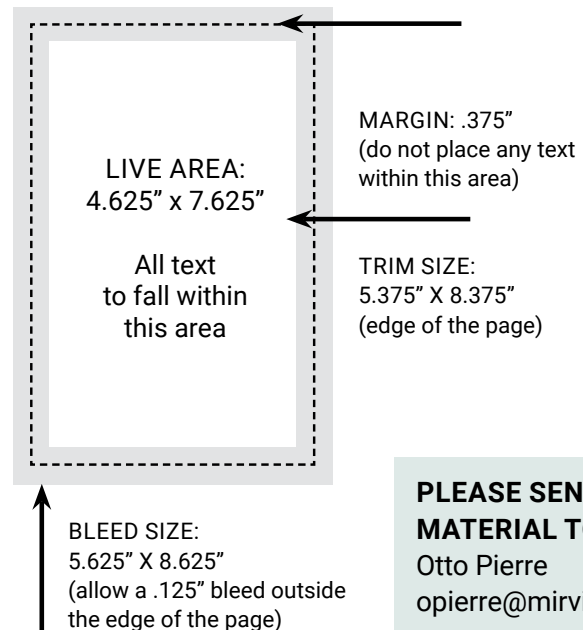
## DOUBLE PAGE SPREAD

Trim Size	Bleed Size	Live Area
10.75" wide 8.375" deep	11" wide 8.625" deep	10" wide 7.625" deep

## FRACTIONAL ADVERTISEMENT

1/2 Horizontal	1/2 Vertical	1/4 Vertical
4.625" wide 3.75" high	2.25" wide 7.625" high	2.25" wide 3.75" high

## FULL PAGE WITH BLEEDS



**PLEASE SEND MATERIAL TO:**  
Otto Pierre  
opierre@mirvish.com

- All critical matter must be kept within .375" from trim edges.
- Preferred file format: high resolution PDF (PDFX-1a).
- Please be sure to include trim, crop marks and bleed on your proof.
- Allow for a .125" bleed outside the trim.
- Images should be a minimum resolution of 300 dpi @ 100% size.
- All RGB images must be converted to CMYK.
- All spot colours (Pantone) must be converted to CMYK.
- Type should be a minimum of 8 point. Reverse type less than 12 point is not suitable for reproduction. Mirvish Productions is not responsible for reproduction of type in sizes smaller than those mentioned above.
- We reserve the right to add a keyline to floating ads to differentiate them from editorial.
- Double page spread creative must be supplied as two single page units with bleed.
- Production charges will apply for material not to specifications or alterations.

**FOR MORE INFORMATION ABOUT MECHANICAL SPECIFICATIONS, PLEASE CONTACT:**

Otto Pierre | opierre@mirvish.com | 322 King Street West, Suite 400, Toronto, Ontario M5V 1J2, Canada

# Mechanical Specifications (Digital Programme)



**1/4 PAGE**  
600 x 280 pixels



**1/2 PAGE**  
600 x 560 pixels



**3/4 PAGE**  
600 x 840 pixels



**FULL PAGE**  
600 x 1120 pixels

- JPG, PNG and GIF files, including animated GIFs.
- 150 dpi
- Maximum file size: 5 MB (images under 1 MB recommended).